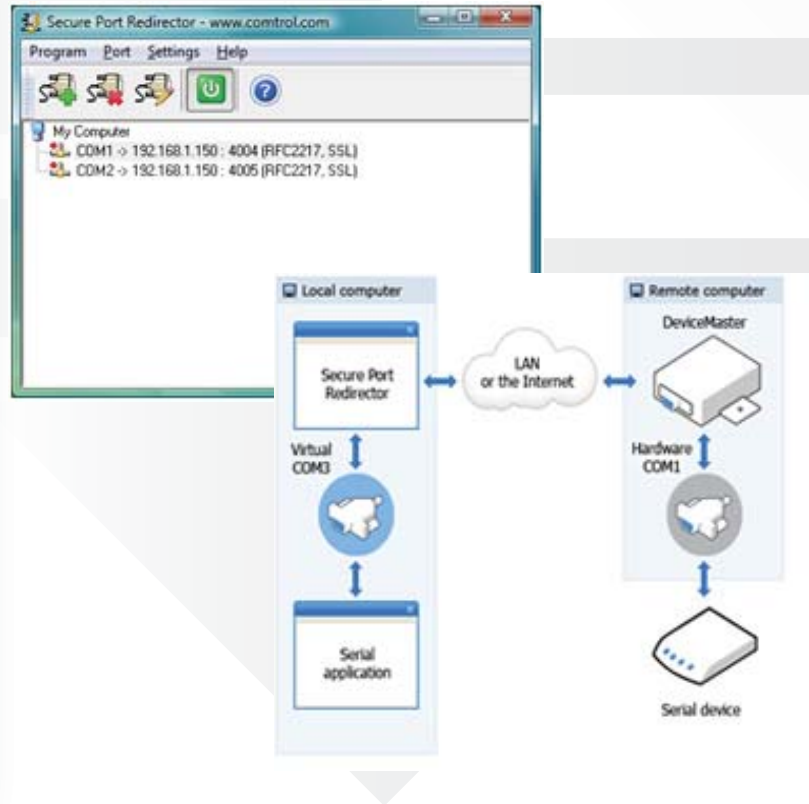


Control DeviceMaster Security



SECURITY FEATURES

- SSL serial data stream encryption configurable on each port
- Enhanced management with SSH and/or SSL configuration
- Strong 256-bit AES encryption
- Compatible with Control PortVision Plus management software
- Security features supported on all standard DeviceMaster RTS, Pro, and Serial Hub models
- Free Secure Port Redirector COM Port Software
- Unlimited secure ports with no add-on licensing fees
- Transparent encryption – no need to update existing applications or serial devices
- Perfect solution for medical, government, and financial applications with data privacy requirements



Encrypted Connections across the LAN, WAN, or Internet

Control DeviceMaster RTS, Pro, and Serial Hub now offer enhanced security featuring SSL and SSH encryption, enabling secure data communication across the network between host applications and DeviceMaster-connected serial devices.

For nearly a decade, DeviceMaster products have performed as proven, reliable solutions in the widest variety of connectivity applications including material handling, power utility, industrial automation, and traffic and transportation. Now, with the addition of secure SSL data stream encryption and SSL/SSH configuration modes, DeviceMaster is able to effectively serve an even greater range of roles, reliably enabling serial to Ethernet communications while protecting sensitive data in government, medical, and financial applications.

DeviceMaster offers two distinct options to users with applications requiring stringent security measures. First, through the use of Secure Port Redirector software, a free download from the Control web site, SSL-secured serial data stream communications are supported through virtual COM port connections. The Secure Port Redirector creates virtual COM ports, accessible just like standard COM ports, that redirect data between the host application and DeviceMaster ports by way of encrypted SSL data streams. As a second measure of security, the DeviceMaster unit itself can be locked down to be virtually impregnable by giving administrators full control over communication ports and encrypted or clear text communication modes.

